



FLUSH WITH GRADE  
CAST IRON VALVE BOX LID  
(SEE SPECIFICATIONS)

6" MIN.  
12" MAX.

ADJUSTABLE SCREW TYPE C.I.  
VALVE BOX UPPER SECTIONS

SNAP ON LOCKING EXTENSION  
ROD W/2" OPERATING NUT TO  
12" MIN., 18" MAX. BELOW GRADE  
IF VALVE OPERATING NUT IS  
OVER 3'-0" DEEP.

CAST IRON VALVE BOX  
LOWER SECTION CENTERED  
OVER OPERATING NUT.

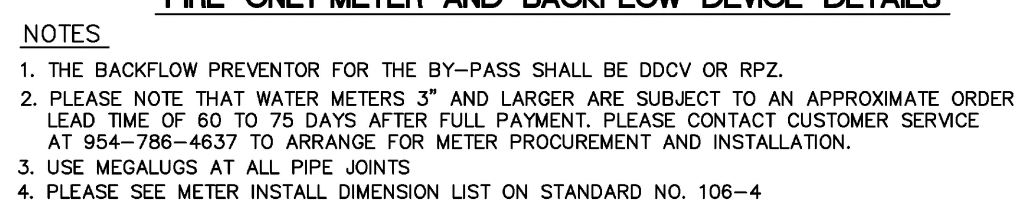
VALVE SIZE AND ENDS  
AS SPECIFIED


GATE OR PLUG VALVE SETTING

USE MEGALUGS AT ALL PIPE JOINTS

ALL D.I.P. TO BE PAINTED  
BLUE ON TOP HALF OF PIPE.

ENGINEERING STANDARDS 2022			
REVISONS		ENGINEERING DIVISION CITY OF POMPANO BEACH	GATE OR PLUG VALVE SETTINGS
BY	DATE		
S.S.	04-2005		
T.W.	11-2007		
SCALE: N.T.S.		DATE: MAY 2022 DWG. NO. 103-1	



FIRE METERS - OS & Y VALVES, GASKETS & METER				
(NEPTUNE MACH 10 Ultrasonic Meter)				
SIZE	VALVES (2)	GASKETS (4)	METER w/ Strainer	TOTAL LENGTH
3" w/ 4" X 3" Reducer **	16"	1/2"	30" **	46 1/2"
4"	18"	1/2"	27 1/2"	46"
6"	21"	1/2"	33"	54 1/2"
8"	23"	1/2"	30"	53 1/2"
10"	26"	1/2"	41"	67 1/2"

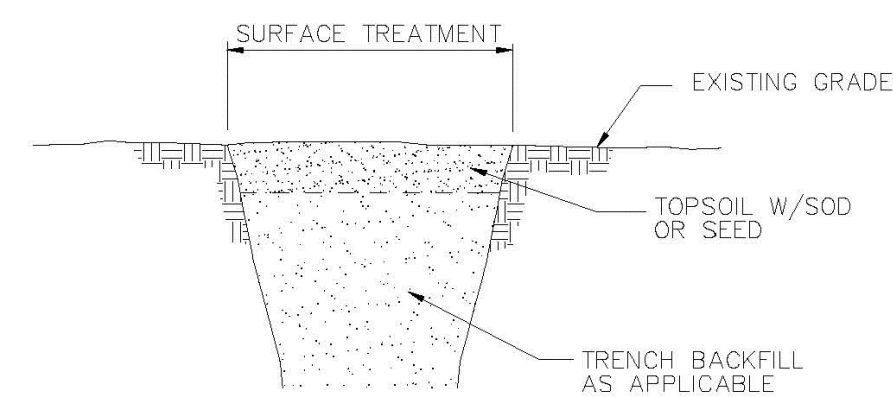
\*All fittings, valves and meters are flanged & all dimensions are from face of flange to face of flange.

NOTE:

PLEASE NOTE THAT WATER METERS 3" AND LARGER ARE SUBJECT TO AN APPROXIMATE ORDER LEAD TIME OF 60 TO 75 BUSINESS DAYS AFTER FULL PAYMENT. PLEASE CONTACT CUSTOMER SERVICE AT 954-786-4637 TO ARRANGE FOR METER PROCUREMENT AND INSTALLATION. LARGE METERS MUST BE AT MINIMUM ORDERED PRIOR TO INITIAL INSPECTIONS.

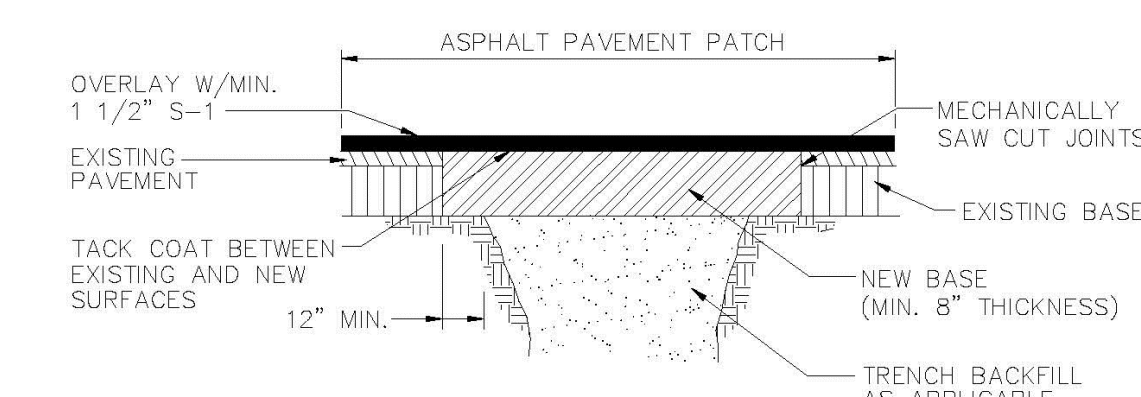
Diagram illustrating a cross-section of a sidewalk restoration project. The diagram shows a cross-section of a sidewalk with a trench cut into it. The trench is filled with backfill material, labeled "TRENCH BACKFILL AS APPLICABLE". The existing sidewalk is shown on the right, labeled "EXISTING SIDEWALK". The new concrete sidewalk is shown on the left, labeled "NEW CONCRETE SIDEWALK". The width of the new concrete sidewalk is indicated as "12\" MIN." and "4\"". The depth of the trench is indicated as "MIN. 3,000 psi CONCRETE". The diagram also shows a "NEAREST EXISTING JOINT" and a "SIDEWALK RESTORATION (TYPE II)".

### SIDEWALK RESTORATION (TYPE II)

SWALE  
RESTORATION (TYPE I)

## SURFACE RESTORATION

Diagram illustrating the cross-section of a perpendicular road crossing (Type II). The diagram shows the existing pavement, asphalt pavement patch, existing base, new base (min. 12" thickness, max. 18" thickness), trench backfill as applicable, and trench (width W). Dimensions include 12" MIN. for the patch width, 2t for the patch thickness, and 2T for the base thickness. The patch is labeled "ASPHALT PAVEMENT PATCH 'W' + 5'-0" MIN." and the trench is labeled "TRENCH 'W'".

PERPENDICULAR ROAD  
CROSSINGS (TYPE III)

### RESTORATION (TYPE IV)

## SURFACE RESTORATION

ENGINEERING STANDARDS 2022			
REVISIONS		ENGINEERING DIVISION CITY OF POMPANO BEACH	SURFACE RESTORATION
BY	DATE		
		SCALE: N.T.S.	DATE: MAY 2022 DWG. NO. 306-2



THIS ITEM HAS BEEN DIGITALLY SIGNED AND SEALED BY JOSE A. COMPRES ON THE DATE INDICATED IN THE SIGNATURE. PRINTED COPIES OF THIS DOCUMENT ARE NOT CONSIDERED SIGNED AND SEALED AND THE SIGNATURE MUST BE VERIFIED ON ANY ELECTRONIC COPIES

JOSE A COMPRES, P.E  
FLORIDA P.E. LIC. # 65557

CONEMCO ENGINEERING, INC.

PROJECT NAME / ADDRESS:  
324 HAUS NEW BUILDING - CIVIL PLANS  
324 NW 6TH ST. POMPANO BEACH, FL 33060

CLIENT/OWNER:  
**MR. RICARDO LARA**

REVISIONS	DATE
2 CITY COMMT.	01-24-2025

DATE:	2/18/2025
SCALE:	AS SHOWN
DRAWN:	FP
CHECKED:	PS
APPVD:	JC
PROJECT ID:	FPV-C231001
CONTRACT NO:	-

SHEET NAME:

## GENERAL WATER AND SEWER DETAILS

DRAWING NO.  
C-505

Sheet No.  
15 OF 18